

[2016-New GreatExam Microsoft 70-448 VCE And PDF Instant Download (321-335)]

Amazing, 100% candidates have passed the 70-448 exam by practising the preparation material of GreatExam, because the braindumps are the latest and cover every aspect of 70-448 exam. Download the braindumps for an undeniable success in 70-448 exam.

QUESTION 321 You are a database developer and you have about two years experience in creating business Intelligence (BI) by using SQL Server 2008. Now you are employed in a company named NaproStar which uses SQL Server 2008. You work as the technical support. Now you receive an e-mail from your company CIO, in the e-mail, the CIO assigns a task to you. You use SQL Server 2008 Reporting Services (SSRS) to create a solution. The solution contains a dimension named DimDay and a measure group named FinishedSales. The DimDay dimension contains an attribute which is named Week. The FinishedSales references the DimDay dimension. According to the requirement of the company CIO, you must make sure that the aggregations designed on FinishedSales always include the Week attribute. So what action should be performed?

A. You should set the Usage property appropriately.
B. You should set the IsAggregatable property appropriately.
C. You should set the AggregationUsage property appropriately.
D. You should set the AttributeHierarchyEnabled property appropriately.

Answer: C
Explanation: Review Aggregation Usage (Aggregation Design Wizard) SQL Server 2008 R2 Other Versions Use the Review Aggregation Usage page to configure aggregation usage settings.

Options: Default: Select to set the aggregation usage setting for the attribute to Default. By using this setting, the designer applies a default rule based on the type of attribute and dimension. Full: Select to set the aggregation usage setting for the attribute to Full. By using this setting, every aggregation for the cube must include this attribute or a related attribute that is lower in the attribute chain. The Full aggregation usage setting should be avoided when an attribute contains many members. If specified for multiple attributes or attributes that have many members, this setting might prevent aggregations from being designed because of excessive size. None: Select to set the aggregation usage setting for the attribute to None. By using this setting, no aggregation for the cube can include this attribute. Unrestricted: Select to set the aggregation usage setting for the attribute to Unrestricted. By using this setting, no restrictions are put on the aggregation designer; however, the attribute must still be evaluated to determine whether it is a valuable aggregation candidate. Set All to Default: Select to set the aggregation usage settings for all attributes to Default. The presence of an (All) level in an attribute hierarchy depends on the IsAggregatable property setting for the attribute and the presence of an (All) level in a user-defined hierarchy depends on the IsAggregatable property of the attribute at the top-most level of user-defined hierarchy. If the IsAggregatable property is set to True, an (All) level will exist. A hierarchy has no (All) level if the IsAggregatable property is set to False.

QUESTION 322 You are a database developer and you have about two years experience in creating business Intelligence (BI) by using SQL Server 2008. Now you are employed in a company named NaproStar which uses SQL Server 2008. You work as the technical support. Now you receive an e-mail from your company CIO, in the e-mail, the CIO assigns a task to you. You use SQL Server 2008 Reporting Services (SSRS) to create a solution. There is a table in the solution. The table is named FinishedBills. The table contains two columns respectively named BillKey and ClientKey. You have to create a measure, the number of customers who have placed bills is returned by the measure. So what action should you perform?

A. The Usage property should be set to Count of rows and the Source Column property should be set to OrderKey.
B. The Usage property should be set to Count of rows and the Source Column property should be set to CustomerKey.
C. The Usage property should be set to Distinct count and the Source Column property should be set to OrderKey.
D. The Usage property should be set to Distinct count and the Source Column property should be set to CustomerKey.

Answer: D

QUESTION 323 You are a database developer and you have about two years experience in creating business Intelligence (BI) by using SQL Server 2008. Now you are employed in a company named NaproStar which uses SQL Server 2008. You work as the technical support. Now you receive an e-mail from your company CIO, in the e-mail, the CIO assigns a task to you. You use SQL Server 2008 Reporting Services (SSRS) to create a project. Data from a SQL Server 2005 Analysis Services database will be displayed by the report. According to the requirement of the company CIO, you must make sure that member properties and extended properties are displayed by the report. So what should you do?

A. The SQL Server Analysis Services data source should be used.
B. The SQL Server data source should be used.
C. The OLE DB for SQL Server data source should be used.
D. The OLE DB for the Analysis Services 8.0 data source should be used.

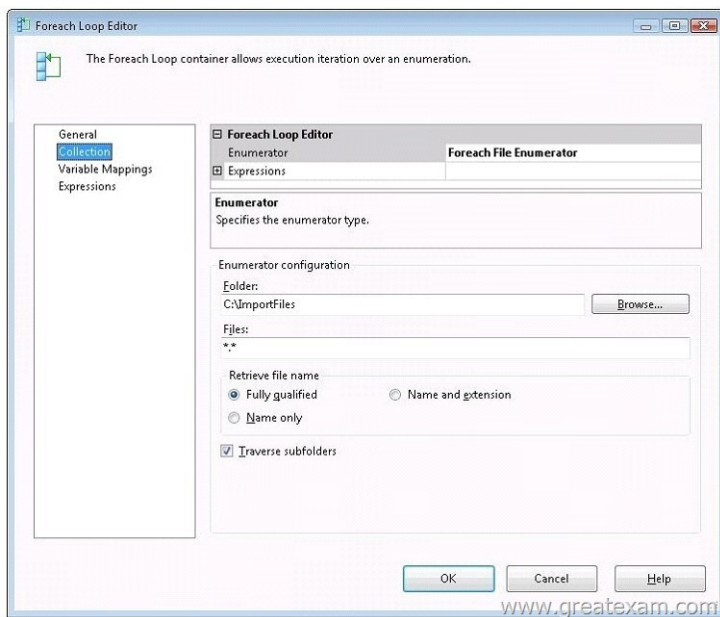
Answer: A

QUESTION 324 You install and configure SQL Server 2008 Reporting Services (SSRS) instance. The users of the report server plan to deliver reports through e-mail messages. You need to configure the report server for e-mail message delivery by using a remote SMTP server. What should you do?

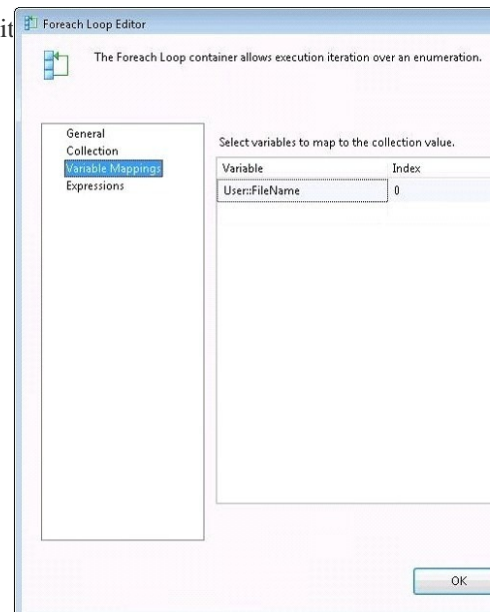
A. Modify the rssrvpolicy.config file.
B. Modify the RSReportServer.config file.
C. Modify the Web.config file.
D. Modify the Global.asax file.

Answer: B

QUESTION 325 You implement a SQL Server 2008 Integration Services (SSIS) package. The package contains the following components: A Foreach Loop container for the Collection property as shown in the following exhibit.



A Foreach Loop container for the Variable Mappings property as shown in the following exhibit



A String variable named FileName. A String variable named DirectoryPath. You need to update the package so that the DirectoryPath variable returns the directory path for the file path stored in the FileName variable. Which two actions should you perform? (Each correct answer presents part of the solution. Choose two.)

A. Set the RaiseChangedEvent property of the User:FileName variable to True.

B. Set the EvaluateAsExpression property of the User:DirectoryPath variable to True.

C. Add a Script task to the OnPostExecute event handler of the Foreach Loop container.

D. Set the Expression property of the User:DirectoryPath variable to the following expression. `SUBSTRING(@[User:FileName], 1, LEN(@[User:FileName]) - FINDSTRING(REVERSE(@[User:FileName]), "\", 1))`

E. Set the Expression property of the User:FileName variable to the following expression. `SUBSTRING(@[User:FileName], 1, LEN(@[User:FileName]) - FINDSTRING(REVERSE(@[User:FileName]), "\", 1))`

Answer: BD

QUESTION 326 You maintain an instance of SQL Server 2008 Reporting Services (SSRS). The instance contains several reports. You deploy a report project on the instance by using the Business Intelligence Development Studio (BIDS). You discover that the production data sources on the instance are replaced by the test data sources of the report project. You need to ensure that when the report project is deployed in future, the existing reports are unaffected. What should you do?

A. Configure the OverwriteDataSources property.

B. Configure the TargetServerURL property.

C. Configure the TargetDataSourceFolder property.

D. Configure the TargetReportFolder property.

Answer: A

QUESTION 327 You are designing a SQL Server 2008 Integration Services (SSIS) package. The package includes a Data Flow task. You need to modify the package to write all rows that

generate errors to a text file. Which two actions should you perform? (Each correct answer presents part of the solution. Choose two.)

A. Use the SSIS log provider for the SQL Profiler. B. Use the SSIS log provider for the text file. C. Use a Flat File Destination component. D. Use a Raw File Destination component. E. Add an Error output to the Data Flow component. Answer: CE

QUESTION 328 You design a SQL Server 2008 Integration Services (SSIS) package that contains several data flows. You need to monitor the data that passes through each path in the data flow by using the Business Intelligence Development Studio. You also need to ensure that data flow logic is retained. What should you do? A. Use the Data Viewer tool. B. Use the Data Profiling task. C. Use the Audit transformation. D. Use breakpoints in the Script component. Answer: A

QUESTION 329 You are designing a SQL Server 2008 Integration Services (SSIS) package. The package includes a Data Flow task that copies several million rows. The data flow requires a match against a reference table that contains 10,000 rows. Each row in the reference table will be used during the data flow. You need to ensure that the data flow executes in the minimum amount of time. Which data flow component should you select? A. a Fuzzy Lookup transformation B. a Lookup transformation along with the Full cache option C. a Lookup transformation along with the No cache option D. a Lookup transformation along with the Partial cache option. Answer: B

QUESTION 330 You maintain a SQL Server 2008 Analysis Services (SSAS) database. When you process the Analysis Services database, you discover that a Duplicate Key error occurs. You need to modify the ErrorConfiguration property so that the error condition is reported and processing continues. Which object should you modify? A. The cube B. The partition C. The dimension D. The measure group. Answer: C

QUESTION 331 You maintain a SQL Server 2008 Analysis Services (SSAS) database. You plan to troubleshoot query performance by using SQL Profiler. You need to identify the queries that take a long time to run. Which trace event should you use? A. Query Cube End B. Query Subcube C. MDX Script End D. Get Data from Cache. Answer: B

QUESTION 332 You create a SQL Server 2008 Reporting Services (SSRS) report that contains a dataset. The dataset retrieves data by executing a stored procedure. The report contains a table and a matrix that use the dataset. You need to limit data that is displayed in the table while ensuring that the matrix is unaffected. What should you do? A. Add a filter to the dataset. B. Add a filter to the matrix. C. Add a filter to the table. D. Add a parameter to the stored procedure that filters the result set. Answer: C

QUESTION 333 You are the administrator of a SQL Server 2008 instance with an Internet Information Services application. This application will use anonymous access to access the SSAS instance. You have to make sure that the application can access the SSAS instance. What should you do? A. The SecurityRequireClientAuthentication server configuration should be set to False. B. The SecurityRequireClientAuthentication server configuration should be set to True. C. The NTLM Security Support Provider Interface (SSPI) provider should be added to the SecuritySecurityPackageList server configuration. D. The Kerberos Security Support Provider Interface (SSPI) provider should be added to the SecuritySecurityPackageList server configuration. Answer: A

QUESTION 334 You are the administrator of a SQL Server 2008 instance. The company CIO wants you to configure FILESTREAM data and the two requirements below must be met: - You must enable FILESTREAM for file I/O streaming access; - Remote client computers must be able to have streaming access to FILESTREAM data. You have to make sure that FILESTREAM data is enabled. Which service should you configure? A. You should configure SQL Server VSS Writer. B. You should configure Distributed File System. C. You should configure SQL Server. D. You should configure SQL Server Full Text. Answer: C

QUESTION 335 You are the administrator of a SQL Server 2008 instance. There is a text file which is named SQL01.log on the E: drive. A SQL Server Agent job executes every 2 minutes and logs information to the text file. You get a report from users saying that the server doesn't make response. As the technical support, you check and find that the SQL Server Agent service does not run and the SQL Server Agent job no longer functions. You have to identify the reason why the SQL Server Agent service is unresponsive. Which log should you check? A. You should check SQL1.log. B. You should check SQLAGENT.OUT. C. You should check log_xx.trc. D. You should check ERRORLOG. Answer: B

You can pass Microsoft 70-448 exam if you get a complete hold of 70-448 braindumps in GreatExam. What's more, all the 70-448 Certification exam Q and As provided by GreatExam are the latest.

<http://www.greatexam.com/70-448-exam-questions.html>