

[2016-New Free GreatExam 70-410 PDF Guarantee 100% Get 70-410 Certification (391-410)]

Now our GreatExam is one step ahead in providing updated real exam dumps for Microsoft 70-410. We give full exam passing guarantee. Buy Microsoft 70-410 dumps and get Microsoft certified. QUESTION 391Hotspot QuestionYou have a server named Server1 that runs Windows Server 2012 R2.You need to switch Server1 to a Server Core installation of Windows Server 2012 R2. What command should you run?To answer, select the appropriate options in the answer area.

Answer Area

Add-WindowsFeature
Install-WindowsFeature
Uninstall-WindowsFeature

Desktop-Experience
Server-Gui-Mgmt-Infra
Server-Gui-Shell

Answer: www.greatexam.com

Answer Area

Add-WindowsFeature
Install-WindowsFeature
Uninstall-WindowsFeature

Desktop-Experience
Server-Gui-Mgmt-Infra
Server-Gui-Shell

-Restart

QUESTION 392You have a server named Server1 that runs Windows Server 2012 R2.You plan to use Windows PowerShell Desired State Configuration (DSC) to confirm that the Application Identity service is running on all file servers.You define the following configuration in the Windows PowerShell Integrated Scripting Environment (ISE)

```
Configuration Configuration1
{
    Service Service1
    {
        Name = "AppIDSvc"
        StartupType = "Automatic"
    }
}
```

You need to use DSC to configure Server1 as defined in the configuration.What should you run first? A. Service 1B. Test-DscConfigurationC. Start-DscConfigurationD. Configuration1 Answer: D QUESTION 393Drag and Drop QuestionYou are configuring a multi-subnet IPv6 network for a regional office.The corporate network administrator allocates the 2001:0db8:1234:0800::/54 address space for your use.You need to identify network IDs of the first and last subnets that you will be able to create at the office.Which network IDs should you identify? To answer, drag the appropriate network IDs to the correct subnets. Each network ID may be used once, more than once, or not at all. You may need to drag the split bar between panes or scroll to view content

Network IDs

2001:0db8:1234:0800::/54
2001:0db8:1234:0800::/64
2001:0db8:1234:0801::/54
2001:0db8:1234:0801::/64
2001:0db8:1234:08ff:/54
2001:0db8:1234:08ff:/64
2001:0db8:1234:0bff:/54
2001:0db8:1234:0bff:/64

Answer Area

First subnet: Network ID

Last subnet: Network ID

www.greatexam.com

Answer:

Network IDs	Answer Area
2001:0db8:1234:0800::/54	First subnet: 2001:0db8:1234:0800::/64
2001:0db8:1234:0800::/64	
2001:0db8:1234:0801::/54	Last subnet: 2001:0db8:1234:0bff:/64
2001:0db8:1234:0801::/64	
2001:0db8:1234:08ff:/54	
2001:0db8:1234:08ff:/64	
2001:0db8:1234:0bff:/54	
2001:0db8:1234:0bff:/64	

www.greatexam.com

QUESTION 394Your network contains an Active Directory domain named contoso.com.The domain contains a DHCP server named Server1 that runs Windows Server 2012 R2.You create a DHCP scope named Scope1. The scope has a start address of 192.168.1.10, an end address of 192.168.1.50, and a subnet mask of 255.255.255.192.You need to ensure that Scope1 has a subnet mask of 255.255.255.0.What should you do first? A. From the DHCP console, reconcile Scope1.B. From the DHCP console, delete Scope1.C. From the DHCP console, modify the Scope Options of Scope1.D. From Windows PowerShell, run the Set-DhcpServerv4Scope cmdlet. Answer: BExplanation:After you create a scope in DHCP, the subnet option is greyed out, you can not change it.You can change the starting and ending ip addresses, but not the subnet mask.So, the only option you have left is to delete it and create a new one with the right subnet.There you can see the subnet option on the DHCP scope:

<https://www.youtube.com/watch?v=atdWcJluCTw> QUESTION 395Hotspot QuestionYou have a print server named Server1 that runs Windows Server 2012 R2.On Server1, you create and share a printer named Printer1.The Advanced settings of Printer1 are shown in the Advanced exhibit. (Click the Exhibit button.)

Printer1 Properties

General Sharing Ports Advanced Color Management Security Device Settings

☐ Always available

☒ Available from 8:00 AM To 5:00 PM

Priority: 1

Driver: Brother Color Type4 Class Driver New Driver...

☒ Spool print documents so program finishes printing faster

☐ Start printing after last page is spooled

☒ Start printing immediately

☐ Print directly to the printer

☐ Hold mismatched documents

☒ Print spooled documents first

☐ Keep printed documents

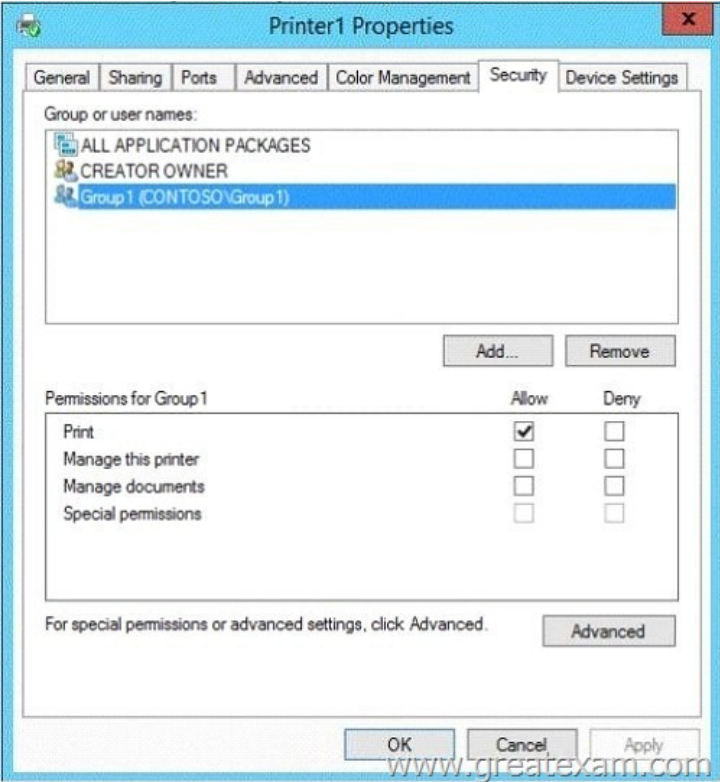
☒ Enable advanced printing features

Printing Defaults... Print Processor... Separator Page...

OK Cancel Apply

www.greatexam.com

The Security settings of Printer1 are shown in the Security exhibit. (Click the Exhibit button.)



The Members settings of a group named Group1 are shown in the Group1 exhibit. (Click the Exhibit button.



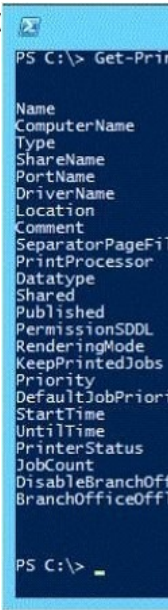
Select Yes if the statement can be shown to be true based on the available information; otherwise select No. Each correct selection is worth one point

	Yes	No
User1 can print on Printer1 on Monday at 18:00.	<input type="radio"/>	<input type="radio"/>
User2 can print on Printer1 on Friday at 14:00.	<input type="radio"/>	<input type="radio"/>
User1 can print on Printer1 on Sunday at 11:00.	<input type="radio"/>	<input type="radio"/>

Answer	Yes	No
User1 can print on Printer1 on Monday at 18:00.	<input type="radio"/>	<input checked="" type="radio"/>
User2 can print on Printer1 on Friday at 14:00.	<input type="radio"/>	<input checked="" type="radio"/>
User1 can print on Printer1 on Sunday at 11:00.	<input checked="" type="radio"/>	<input type="radio"/>

www.greatexam.com

QUESTION 396Hotspot QuestionA printer named Printer1 is configured as shown in the exhibit. (Click the Exhibit button.)



To answer, complete each statement according to the information presented in the exhibit.Each correct selection is worth one point

Answer Area
If a user prints a document to Printer1, the document will ...
Users can submit print jobs to Printer1 ...

Answer

Answer Area [www.greatexam.com](#)

If a user prints a document to Printer1, the document will ...

remain in the print queue.
print immediately on LPT1.
print immediately on LPT2.

Users can submit print jobs to Printer1 ...

at any time.
at no time.
between 01:00 and 10:00.
between 10:00 and 17:00.

QUESTION 397Hotspot QuestionYour network contains an Active Directory domain named contoso.com.All servers run Windows Server 2012 R2.You need to add a user named User1 to a group named ServerAdmins.What command should you run?To answer, select the appropriate options in the answer area.

Answer Area

<div><div></div><div>Add-AdGroupMember</div><div>Add-Member</div><div>Set-AdGroup</div><div>Set-AdUser</div></div>	-identity	<div><div></div><div>ServerAdmins</div><div>User1</div></div>	<div><div></div><div>ServerAdmins</div><div>User1</div></div>
--	-----------	---	---

www.greatexam.com

Answer

Answer Area

<div><div></div><div>Add-AdGroupMember</div><div>Add-Member</div><div>Set-AdGroup</div><div>Set-AdUser</div></div>	-identity	<div><div></div><div>ServerAdmins</div><div>User1</div></div>	<div><div></div><div>ServerAdmins</div><div>User1</div></div>
--	-----------	---	---

www.greatexam.com

QUESTION 398Hotspot QuestionYou have a DHCP server named Server1 that runs Windows Server 2012 R2.On Server1, you run the commands as shown in the exhibit. (Click the Exhibit button.)

```
Administrator: Windows PowerShell
PS C:\> Add-DhcpServerv4Scope -Name Scope1 -StartRange 192.168.10.11 -EndRange 192.168.10.200 -SubnetMask 255.255.255.0
PS C:\> Add-DhcpServerv4Scope -Name Scope2 -StartRange 192.168.15.11 -EndRange 192.168.15.200 -SubnetMask 255.255.255.0
PS C:\> Add-DhcpServerv4Reservation -ScopeId 192.168.10.0 -IPAddress 192.168.10.15 -ClientId AABBCDDEEFF
PS C:\> Set-DhcpServerv4Scope -ScopeId 192.168.15.0 -StartRange 192.168.15.11 -EndRange 192.168.15.230
PS C:\> Add-DhcpServerv4ExclusionRange -ScopeId 192.168.15.0 -StartRange 192.168.15.21 -EndRange 192.168.15.30
PS C:\> Set-DhcpServerv4OptionValue -DnsServer 172.16.1.250 -ReservedIP 192.168.10.15
PS C:\> Set-DhcpServerv4OptionValue -DnsServer 192.168.15.250 -Router 192.168.15.1 -ScopeId 192.168.15.0
PS C:\> Set-DhcpServerv4OptionValue -DnsServer 192.168.10.250
PS C:\>
```

www.greatexam.com

To answer, complete each statement according to the information presented in the exhibit.Each correct selection is worth one point

Answer

A computer that has a MAC address of AABBCDDEEFF will get the DNS server address of ... from Server1 when the computer is connected to the 192.168.15.0/24 segment.

<div><div></div><div>172.16.1.250</div><div>192.168.10.250</div><div>192.168.15.250</div></div>

Server1 can lease ... addresses on the 192.168.15.0/24 segment.

<div><div></div><div>10</div><div>210</div><div>220</div><div>254</div></div>

www.greatexam.com

QUESTION 399Drag and Drop QuestionYou have a server named Server1 that runs Windows Server 2012 R2.You need to perform the following storage configuration tasks on Server1:- Bring a disk named Disk1 online.- Defragment a volume named Volume1.- Remove a disk named Disk2 from a storage pool named Pool1.Which cmdlet should you use to perform each task? To answer, drag the appropriate cmdlets to the correct tasks. Each cmdlet may be used once, more than once, or not at all. You may need to drag the split bar between panes or scroll to view content.

Cmdlets	Answer Area
Initialize-Disk	Bring a disk named Disk1 online. <input type="text" value="Cmdlet"/>
Optimize-Volume	Defragment a volume named Volume1. <input type="text" value="Cmdlet"/>
Remove-PhysicalDisk	Remove a disk named Disk2 from a storage pool named Pool1. <input type="text" value="Cmdlet"/>
Repair-Volume	
Set-Disk	
Set-PhysicalDisk	
Set-StoragePool	
Update-Disk	

www.greatexam.com

Cmdlets	Answer Area
Initialize-Disk	Bring a disk named Disk1 online. <input type="text" value="Set-Disk"/>
Optimize-Volume	Defragment a volume named Volume1. <input type="text" value="Optimize-Volume"/>
Remove-PhysicalDisk	Remove a disk named Disk2 from a storage pool named Pool1. <input type="text" value="Remove-PhysicalDisk"/>
Repair-Volume	
Set-Disk	
Set-PhysicalDisk	
Set-StoragePool	
Update-Disk	

www.greatexam.com

QUESTION 400 Your network contains an Active Directory domain named contoso.com. You have a DHCP server named Server1 that runs Windows Server 2008. You install Windows Server 2012 R2 on a server named Server2. You install the DHCP Server server role on Server2. You need to migrate the DHCP services from Server1 to Server2. The solution must meet the following requirements:- Ensure that existing leases are migrated.- Prevent lease conflicts. Which three actions should you perform? (Each correct answer presents part of the solution. Choose three.)

A. On Server1, run the Export-DhcpServer cmdlet. B. On Server1, run the Stop-Service cmdlet. C. On Server2, run the Receive-SmigServerData cmdlet. D. On Server2, run the Stop-Service cmdlet. E. On Server2, run the Import-DhcpServer cmdlet. F. On Server1, run the Send-SmigServerData cmdlet.

Answer: ABE

QUESTION 401 You have a server named Server1 that runs Windows Server 2012 R2. Server1 has three physical network adapters named NIC1, NIC2, and NIC3. On Server1, you create a NIC team named Team1 by using NIC1 and NIC2. You configure Team1 to accept network traffic on VLAN 10. You need to ensure that Server1 can accept network traffic on VLAN 10 and VLAN 11. The solution must ensure that the network traffic can be received on both VLANs if a network adapter fails. What should you do?

A. From Server Manager, change the load balancing mode of Team1. B. Run the New-NetLbfoTeam cmdlet. C. From Server Manager, add an interface to Team1. D. Run the Add-NetLbfoTeamMember cmdlet.

Answer: C

QUESTION 402 You have a server named Server1 that runs Windows Server 2012 R2. You need to create a script that will create and mount a virtual hard disk. Which tool should you use?

A. vdsldr.exe B. diskpart.exe C. fsutil.exe D. vds.exe

Answer: B

QUESTION 403 Hotspot Question Your network contains an Active Directory domain named contoso.com. All domain controllers run Windows Server 2012 R2. All server are configured to enforce AppLocker policies. You install a server named Server1. On Server1, you install an application named appl.exe in a folder located on C:App1. You have two domain groups named Group1 and Group2. A user named User1 is a member of Group1 and Group2. You create a Group Policy object (GPO) named GPO1. You link GPO1 to contoso.com. You create the executable rules as shown in the exhibit by using the Create Executable Rules wizard. (Click the Exhibit button.)

Action	User
Allow	Everyone
Allow	Everyone
Allow	BUILTIN\...
Allow	CONTOSO\...
Deny	Everyone
Allow	CONTOSO\...
Deny	CONTOSO\...

To answer, complete each statement according to the information presented in the exhibit. Each correct selection is worth one point.

Answer Area www.greatexam.com

User1 can run regedit.exe if ...

User1 is removed from Group2.
User1 is added to the Domain Admins group.
regedit.exe is renamed as registryeditor.exe.

User1 can run app1.exe if ...

app1.exe is renamed as app2.exe.
the Deny rule for app1.exe is removed.
an exception is added to the default rules.
Group1 is added to the Domain Admins group.
User1 is added to the BUILTIN\Administrators group

Answer: Answer Area www.greatexam.com

User1 can run regedit.exe if ...

User1 is removed from Group2.
User1 is added to the Domain Admins group.
regedit.exe is renamed as registryeditor.exe.

User1 can run app1.exe if ...

app1.exe is renamed as app2.exe.
the Deny rule for app1.exe is removed.
an exception is added to the default rules.
Group1 is added to the Domain Admins group.
User1 is added to the BUILTIN\Administrators group

QUESTION 404 You have virtual machine named VM1. VM1 uses a fixed size virtual hard disk (VHD) named disk1.vhd. Disk1.vhd is 200 GB. You shut down VM1. You need to reduce the size of disk1.vhd. Which action should you select from the Edit Virtual Hard Disk Wizard? A. Merge B. Compact C. Shrink D. Convert
Answer: D
Explanation: The Edit Virtual Hard Disk Wizard allows you to Compact, Convert, or Expand the VHD. Compacting reduces the size of a dynamically expanding VHD but not a fixed-size VHD. Converting changes the disk format to the newer VHDX. This process recreates the virtual disk, and allows you to specify the size of the VHDX.

<http://blogs.technet.com/b/yungchou/archive/2013/01/23/hyper-v-virtual-hard-disk-vhd-operations-explained.aspx>

<http://blogs.technet.com/b/aviraj/archive/2012/05/06/windows-server-2012-convert-vhd-to-vhdx-using-hyper-v-manager.aspx>

QUESTION 405 You have a Hyper-V host named Server1 that runs Windows Server 2012 R2. Server1 hosts 50 virtual machines that run Windows Server 2012 R2. Your company uses smart cards for authentication. You need to ensure that you can use smart card authentication when you connect to the virtual machine by using Virtual Machine Connection. What should you configure? A. The NUMA Spanning settings B. The RemoteFX settings C. The Enhanced Session Mode Policy D. The Integration Services settings
Answer: C

QUESTION 406 Your network contains an Active Directory domain named contoso.com. The domain contains a server named Server1. Server1 runs Windows Server 2012 R2. You need to create a 3-TB virtual hard disk (VHD) on Server1. Which tool should you use? A. Computer Management B. Server Manager C. Share and Storage Management D. New-VirtualDisk
Answer: A

Explanation: For other questions to create a VHD (file) you can use computer management. - Share and storage management (2008 only) - New-storage subsystem VirtualDisk (this is a virtual disk, NOT a virtual hard disk) - Server Manager (you would use this to create virtual disks, not virtual hard disks)

QUESTION 407 Hotspot Question You have a Hyper-V host named Server1 that runs Windows Server 2012 R2. Server1 hosts 40 virtual machines that run Windows Server 2008 R2. The virtual machines connect to a private virtual switch. You have a file that you want to copy to all of the virtual machines. You need to identify to which servers you can copy files by using the Copy-VmFile cmdlet. What command should you run? To answer, select the appropriate options in the answer area

Answer Area www.greatexam.com

~ComputerName Server1 |

Compare-Vm
Get-Vm
Get-VmHost

Get-VIntegrationService -Name | where Enabled -eq \$true

"Data Exchange Service"
"Guest Service Interface"
"Heartbeat Service"

Answer

Answer Area

www.greatexam.com

-ComputerName Server1 |

Compare-Vm
Get-Vm
Get-VmHost

Get-VIntegrationService -Name "Data Exchange Service"
"Guest Service Interface"
"Heartbeat Service" | where Enabled -eq \$true

QUESTION 408 Hotspot Question Your network contains an Active Directory forest. The forest contains a single domain named contoso.com. AppLocker policies are enforced on all member servers. You view the AppLocker policy applied to the member servers as shown in the exhibit. (Click the Exhibit button.)



To answer, complete each statement according to the information presented in the exhibit. Each correct selection is worth one point.

Answer Area

... can run Internet Explorer on the servers.

No one
Everyone
Only local users
Only the members of Domain Admins
Only the members of a group named ServerAdmins

... can run Windows Mail on the servers.

No one
Everyone
Only local users
Only the members of Domain Admins
Only the members of a group named ServerAdmins

Explanation: Windows Mail is not present on windows servers, so "No one can run Windows Mail on the servers." At the exam Windows Mail was changed with Wordpad. So "Everyone can run Wordpad on the servers".

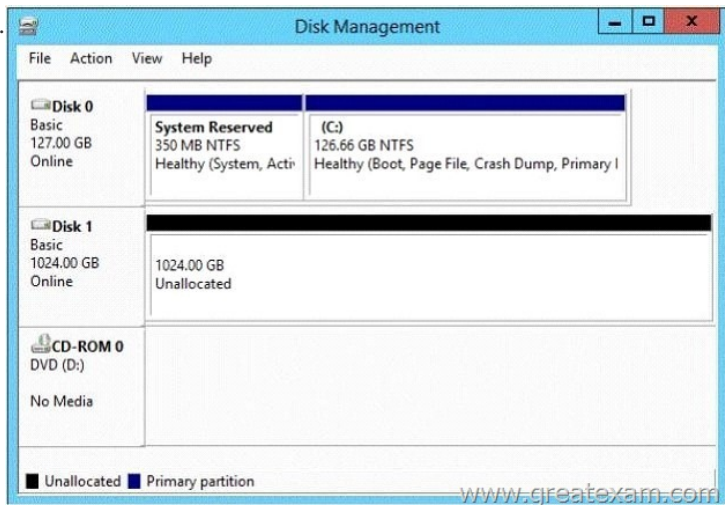
QUESTION 409 Your network contains an Active Directory domain named contoso.com. The domain contains a member server named Server1. Server1 runs Windows Server 2012 R2 and has the DHCP Server server role installed. You create two IPv4 scopes on Server1. The scopes are configured as shown in the following table.

Scope name	IPv4 scope
------------	------------

Scope name	IPv4 scope
Subnet_Tor	192.168.2.0/24
Subnet_Mtl	192.168.1.0/24

The DHCP clients in Subnet_Tor can connect to the client computers in Subnet_Mtl by using an IP address or a FQDN. You discover that the DHCP clients in Subnet_Mtl can connect to client computers in Subnet_Tor by using an IP address only. You need

to ensure that the DHCP clients in both subnets can connect to any other DHCP client by using a FQDN. What should you add? A. The 015 DNS Domain Name option to Subnet_MtlB. The 015 DNS Domain Name option to Subnet_TorC. The 006 DNS Servers option to Subnet_MtlD. The 006 DNS Servers option to Subnet_Tor Answer: C QUESTION 410 You have a server named Server1 that runs Windows Server 2012 R2. You add an additional disk to Server1 as shown in the exhibit. (Click the Exhibit button.



You need to ensure that users can access the additional disk from drive C. What should you do? A. Convert Disk 0 and Disk 1 to dynamic disks and extend a volume. B. Convert Disk 1 to a dynamic disk and create a spanned volume. C. Create a simple volume on Disk 1 and mount the volume to a folder. D. Convert Disk 0 to a dynamic disk and add a mirror. Answer: C The 70-410 braindumps are the latest, authenticated by expert and covering each and every aspect of 70-410 exam. Comparing with others, our exam questions are rich in variety. We offer PDF dumps, 70-410 practice test and 70-410 VCE dumps. Welcome to choose. <http://www.greatexam.com/70-410-exam-questions.html>