

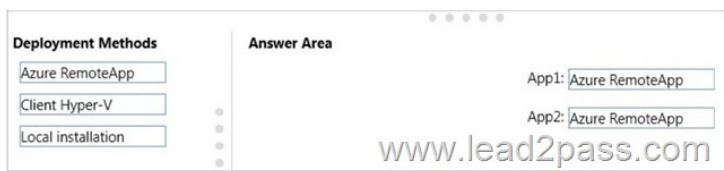
## [Q11-Q20 2017 Updated Lead2pass Microsoft 70-697 Exam Questions

70-697 Exam Dumps Free Download In Lead2pass 100% 70-697 Exam Questions: <https://www.lead2pass.com/70-697.html>

**QUESTION 11** Drag and Drop Question You manage 50 computers that run Windows 10 Enterprise. You have a Microsoft Azure RemoteApp deployment. The deployment consists of a hybrid collection named Collection1. All computers have the Hyper-V feature installed and have a virtual machine that runs Windows 7. You plan to install applications named App1 and App2 and make them available to all users. App1 is a 32-bit application. App2 is a 64-bit application. You need to identify the installation method for each application. The solution needs to minimize the number of installations. Which deployment method should you identify for each application? To answer, drag the appropriate deployment methods to the correct applications. Each deployment method may be used once, more than once, or not at all. You may need to drag the split bar between panes or scroll to view content. **NOTE:** Each correct selection is worth one point.



Answer:



**Explanation:** Azure RemoteApp supports streaming 32-bit or 64-bit Windows-based applications. Therefore, we can minimize the number of installations by installing the applications on Azure and making them available as Azure RemoteApps. This would mean one installation for App1 and one installation for App2. **Incorrect Answers:** The two other installation options (client Hyper-V and Local installation) would involve installing the application once for each computer: 50 installations for each app.

<https://azure.microsoft.com/en-gb/documentation/articles/remoteapp-appreqs/> **QUESTION 12** 70-697 Dumps, 70-697 Exam Questions, 70-697 New Questions, 70-697 VCE, 70-697 PDF You plan to deploy a Microsoft Azure RemoteApp collection by using a custom template image. The image will contain Microsoft Office 365 ProPlus apps. You need to ensure that multiple users can run Office 365 ProPlus from the custom template image simultaneously. What should you include in the configuration file? A.

<Property Name = "FORCEAPPSHUTDOWN" Value = "FALSE" /> B. <Product ID = "0365ProPlusRetail" /> C. <Property Name = "SharedComputerLicensing" Value = "1" /> D. <Property Name = "AUTOACTIVATE" Value = "1" /> **Answer: C**

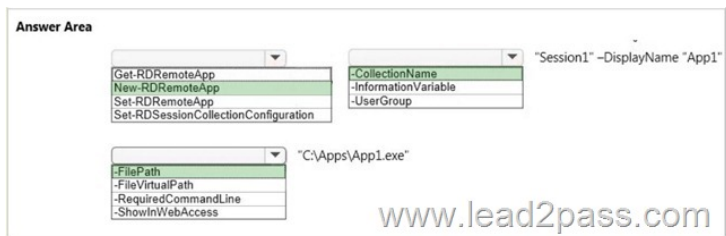
**Explanation:** To make Microsoft Office 365 ProPlus apps available as RemoteApps, you need to enable Shared computer activation. You do this by including the following text in the configuration file: <Property Name = "SharedComputerLicensing" Value = "1" /> Shared computer activation lets you to deploy Office 365 ProPlus to a computer in your organization that is accessed by multiple users. For example, several nurses at a hospital connect to the same remote server to use their applications or a group of workers share a computer at a factory. The most common shared computer activation scenario is to deploy Office 365 ProPlus to shared computers by using Remote Desktop Services (RDS). By using RDS, multiple users can connect to the same remote computer at the same time. The users can each run Office 365 ProPlus programs, such as Word or Excel, at the same time on the remote computer.

**Incorrect Answers:** A: This setting determines how click-to-run apps are shutdown when an app is open. This setting is not required to ensure that multiple users can run Office 365 ProPlus using RemoteApp. B: This setting is used for the installation of Office 365. This setting is not required to ensure that multiple users can run Office 365 ProPlus using RemoteApp. D: This setting determines how Office 365 is activated. This setting is not required to ensure that multiple users can run Office 365 ProPlus using RemoteApp.

<https://technet.microsoft.com/en-us/library/dn782858.aspx> **QUESTION 13** 70-697 Dumps, 70-697 Exam Questions, 70-697 New Questions, 70-697 VCE, 70-697 PDF Hotspot Question You have a server that runs Windows Server 2012 R2 server named Server1. Server1 has Remote Desktop Services (RDS) installed. You create a session collection named Session1 and publish a RemoteApp in Session1. Server1 has an application named App1. The executable for App1 is C:\Apps\App1.exe. You need to ensure that App1 is available as a RemoteApp in Session1. What command should you run? To answer, select the appropriate options in the answer area.

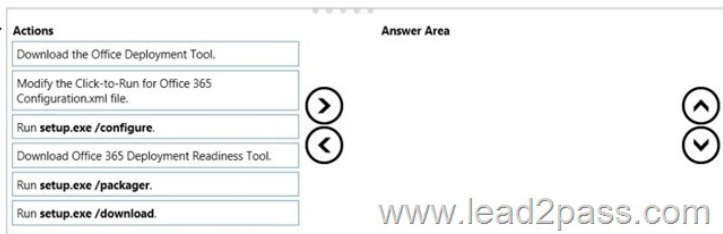


Answer:

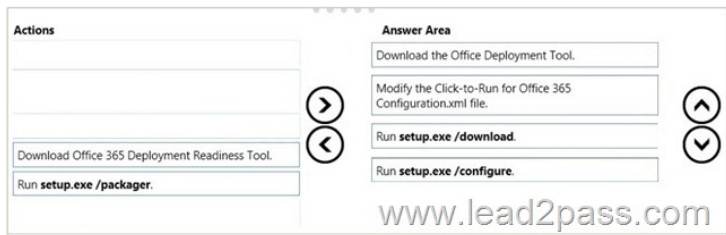


Explanation: We need to publish App1 as a RemoteApp. We do this with the New-RDRemoteApp cmdlet. The -CollectionName parameter allows us to specify the session as "Session1". The display name for the App1 will be "App1". The -FilePath parameter allows us to specify the path to the executable for App1. Incorrect Answers: Get-RDRemoteApp just retrieves information about existing RemoteApps. Set-RDRemoteApp is used to reconfigure an existing RemoteApp. This question does not ask us to reconfigure the existing RemoteApp; it asks us to make App1 available as (another) RemoteApp.

Set-RDSessionCollectionConfiguration is used to modify a session collection. It is not used to deploy a RemoteApp to a session collection. <https://technet.microsoft.com/en-us/library/jj215450.aspx> QUESTION 14 70-697 Dumps, 70-697 Exam Questions, 70-697 New Questions, 70-697 VCE, 70-697 PDF Drag and Drop Question You plan to deploy a Microsoft Azure RemoteApp collection by using a custom template image. The image will contain Microsoft Word and Excel Office 365 ProPlus programs. You need to install the Word and Excel programs. The solution must minimize the amount of Internet traffic used during installation. Which four actions should you perform in sequence? To answer, move the appropriate actions from the list of actions to the answer area and arrange them in the correct order.



Answer:



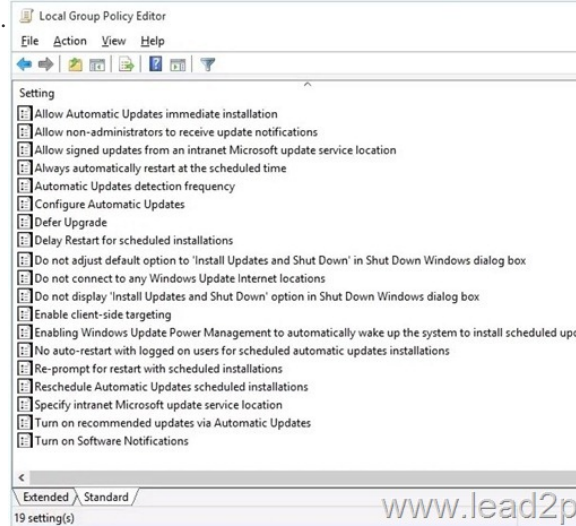
Explanation: The first step is to download the Office Deployment Tool. You then need to modify the configuration file. This will be used to specify the installation options for Word and Excel. You then run Setup.exe from the Office Deployment Tool with the /download option to download the required software based on the options in the configuration file. The final step is to install Word and Excel by running Setup.exe from the Office Deployment Tool with the /configure option to install the required software based on the options in the configuration file. Incorrect Answers: You do not need the Office 365 Deployment Readiness Tool. This is used to check if your environment can support Office 365. Setup.exe with the /packager option is used to create App-V packages. We are not using App-V in this question. <http://blogs.technet.com/b/odsupport/archive/2014/07/11/using-the-office-deployment-tool.aspx> <https://technet.microsoft.com/library/Dn782858.aspx> QUESTION 15 70-697 Dumps, 70-697 Exam Questions, 70-697 New Questions, 70-697 VCE, 70-697 PDF You have a computer named Computer1 that runs Windows 10 Enterprise. You need to identify

the locations that you can select as a File History drive. What are two possible locations? Each correct answer presents a complete solution? A. the operating system volume B. an unformatted partition C. a non-system volume D. a network share  
Answer: CD  
Explanation: You can use a non-system volume as a File History drive. This can be a volume on a hard drive in a computer, a Virtual Hard Drive (VHD) or an external USB drive. You can also use a network share as a File History drive. In the File History Control Panel item, you can click the "Select Drive" option. This will display a list of all detected drives that are suitable for use as the File History drive. Under the list of drives, there is a link "Add Network Location". You can click the link and browse to or enter the path to the network share.  
Incorrect Answers: A: You cannot use the operating system volume (usually the C: drive) as the File History drive. B: The volume used for the File History drive must be a formatted volume.

<http://computerbeginnersguides.com/blog/2015/08/23/enable-file-history-backups-in-windows-10/> QUESTION 16 70-697

Dumps, 70-697 Exam Questions, 70-697 New Questions, 70-697 VCE, 70-697 PDF You have a computer named Computer1 that runs Windows 10 Enterprise. Computer1 is configured to receive Windows updates from the Internet. If a user is logged on to Computer1, you need to prevent Computer1 from automatically restarting without the logged on user's consent after the installation of the Windows updates. What should you do? A. Enable the Defer upgrades setting. B. Edit the Automatic App Update scheduled task. C. Configure the Choose how updates are delivered setting. D. Configure the Choose how updates are installed setting.  
Answer: D  
Explanation: In the Choose how updates are installed setting, you can use the drop-down menu to choose an option: - Schedule a restart - Automatically restart  
The Schedule a restart option will allow the user to choose when the computer is restarted. Of the answers given, this is the only way to prevent Computer1 from automatically restarting without the logged on user's consent after the installation of the Windows updates.  
Incorrect Answers: A: The Defer Upgrades setting delays feature upgrades for several months while allowing security updates through. It does not prevent a computer from automatically restarting without the logged on user's consent after the installation of the Windows updates. B: The Automatic App Update scheduled task is for updating Windows Store Apps, not the operating system. Furthermore, there is no setting in the Automatic App Update scheduled task that can prevent a computer from automatically restarting without the logged on user's consent after the installation of updates. C: The Choose how updates are delivered setting can be used to enable or disable peer-to-peer updates. This is where one computer on the network downloads the updates from Microsoft and other computers on the network download the updates from that computer. This setting cannot prevent a computer from automatically restarting without the logged on user's consent after the installation of the Windows updates.  
<http://windows.microsoft.com/en-gb/windows-10/getstarted-choose-how-updates-are-installed> QUESTION 17 70-697

Dumps, 70-697 Exam Questions, 70-697 New Questions, 70-697 VCE, 70-697 PDF Hotspot Question You have a computer that runs Windows 10 Enterprise that has a local group policy as shown in the following graphic.



Use the drop-down menus to select the answer choice that completes each statement based on the information presented in the graphic. NOTE: Each correct selection is worth one point.

**Answer Area**

Windows updates will be downloaded from [answer choice].

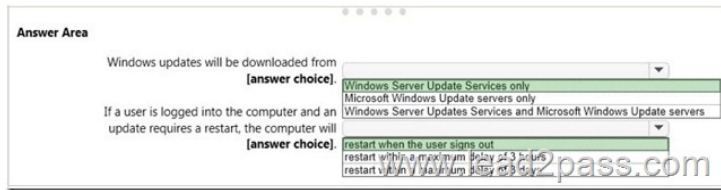
If a user is logged into the computer and an update requires a restart, the computer will [answer choice].

Windows Server Update Services only  
Microsoft Windows Update servers only  
Windows Server Updates Services and Microsoft Windows Update servers

restart when the user signs out  
restart with a maximum delay of 30 minutes  
restart with a maximum delay of 90 minutes

www.lead2pass.com

Answer:



Explanation: Windows Updates will be downloaded from Windows Server Update Services only. This is determined by the "Specify Intranet Microsoft Update Service Location" setting and the "Do not connect to any Windows Update Internet locations" setting both being `Enabled`. In the "Specify Intranet Microsoft Update Service Location" setting, you can specify the name of the Windows Server Updates Services server. If a user is logged into the computer and an update requires a restart, the computer will restart when the user signs out. This is determined by the "No auto-restart with logged on users for schedule automatic updates" setting being enabled. This group policy setting creates a registry key named NoAutoRebootWithLoggedOnUsers and sets the value of the key to 1 (enabled). With this setting enabled, you should be aware that the computer should be restarted at the earliest opportunity in order to complete the installation of the Windows Updates. Incorrect Answers: The "restart with a maximum delay of 3 hours or 3 days" answers are incorrect. The computer will never restart for as long as a user is logged in. The user could be logged in indefinitely and the computer will not restart. QUESTION 18 You use a Windows 8.1 tablet. The tablet receives Windows Update updates automatically from the Internet. The tablet has Wi-Fi and is connected to a 3G mobile broadband Wi-Fi hot spot. You need to minimize data usage while connected to this hot spot. What should you do? A. Turn on Airplane Mode. B. Disable File and Print Sharing for mobile broadband connections. C. Configure the interface metric of IP settings for Wi-Fi connection as 1. D. Edit the Inbound Rule of Windows Firewall, and then disable Internet Control Message Protocol (ICMP) traffic. E. Configure the broadband connection as a metered network. Answer: E Explanation: You can limit the bandwidth used by the broadband connection by configuring it as a metered network. A metered network is a network where data downloaded is `metered` (measured) and you are charged for the amount of data downloaded. Setting a connection as metered prevents Windows from automatically using bandwidth in a number of ways including the following: Disables automatic downloading of Windows updates: Windows won't automatically download updates from Windows Update on metered Internet connections. You'll get a "Download" button you can click whenever you want to install updates. Disables automatic downloading of app updates: The Windows Store won't automatically download updates for your installed "Store apps" on metered connections, either. Desktop apps like Chrome, Firefox, and others will continue updating themselves normally. Tiles may not update: Microsoft says that the live tiles on your Start menu or Start screen "may" stop updating on a metered connection. Incorrect Answers: A: Turning on Airplane Mode would disable the Wi-Fi connection which would prevent you from connecting to the Internet. It would `minimize data usage` but you would lose your connection to the Wi-Fi hotspot. B: Disabling File and Print Sharing for mobile broadband connections is not best way to minimize data usage. It is very unlikely that data usage while connected to a 3G mobile broadband Wi-Fi hot spot is network sharing traffic. C: Modifying the metric of the Wi-Fi connection will have no effect on the amount of data used. An interface metric is used to determine which interface will be used when there are multiple active connections. D: Disabling Internet Control Message Protocol (ICMP) traffic on the firewall is not best way to minimize data usage. The data usage will not be caused by ICMP traffic.

<http://www.howtogeek.com/226722/how-when-and-why-to-set-a-connection-as-metered-on-windows-10/> QUESTION 19 You support Windows 10 Enterprise computers that are members of an Active Directory domain. Your company policy defines the list of approved Windows Store apps that are allowed for download and installation. You have created a new AppLocker Packaged Apps policy to help enforce the company policy. You need to test the new AppLocker Packaged Apps policy before you implement it for the entire company. What should you do? A. From Group Policy, enforce the new AppLocker policy in Audit Only mode. B. From Group Policy, run the Group Policy Results Wizard. C. From Group Policy, run the Group Policy Modeling Wizard. D. From PowerShell, run the Get-AppLockerPolicy -effective command to retrieve the AppLocker effective policy. Answer: A Explanation: You can test an AppLocker Packaged Apps policy by running it in audit mode. After AppLocker rules are created within the rule collection, you can configure the enforcement setting to Enforce rules or Audit only. When AppLocker policy enforcement is set to Enforce rules, rules are enforced for the rule collection and all events are audited. When AppLocker policy enforcement is set to Audit only, rules are only evaluated but all events generated from that evaluation are written to the AppLocker log. Incorrect Answers: B: The Group Policy Results Wizard is used to determine which group policy settings are applied to a user or computer object and the net results when multiple group policies are applied. The Group Policy Results Wizard is not used to test an AppLocker Packaged Apps policy. C: The Group Policy Modeling Wizard calculates the simulated net effect of group policies. Group Policy Modeling can also simulate such things as security group membership, WMI filter evaluation, and the effects of

moving user or computer objects to a different Active Directory container. The Group Policy Modeling Wizard is not used to test an AppLocker Packaged Apps policy. D: The Get-AppLockerPolicy -Effective command returns the effective AppLocker policy on the local computer. The effective policy is the merge of the local AppLocker policy and any applied domain policies on the local computer. The Get-AppLockerPolicy -effective command is not used to test an AppLocker Packaged Apps policy.

[https://technet.microsoft.com/en-us/library/ee791796\(v=ws.10\).aspx](https://technet.microsoft.com/en-us/library/ee791796(v=ws.10).aspx) QUESTION 20 You support Windows 10 Enterprise computers. Your company has started testing Application Virtualization (App-V) applications on several laptops. You discover that the App-V applications are available to users even when the laptops are offline. You need to ensure that the App-V applications are available to users only when they are connected to the company network. What should you do? A. Change user permissions to the App-V applications. B. Disable the Disconnected operation mode. C. Configure mandatory profiles for laptop users. D. Reset the App-V client FileSystem cache. Answer: B Explanation: Disconnected operation mode is enabled by default and allows App-V applications to be available to users even when the laptops are offline. We need to disable Disconnected operation mode to prevent offline access. The disconnected operation mode settings -- accessible by right-clicking the Application Virtualization node, selecting Properties, and clicking the Connectivity tab -- enables the Application Virtualization Desktop Client or Client for Remote Desktop Services (formerly Terminal Services) to run applications that are stored in the file system cache of the client when the client is unable to connect to the Application Virtualization Management Server. Incorrect Answers: A: The ability to run an App-V application while the computer is offline is not determined by user permissions. C: Mandatory profiles prevent users from making changes to their user profile. They do not prevent offline access to App-V applications. D: When an App-V application is downloaded, it is stored in the App-V client FileSystem cache. Resetting the App-V client FileSystem cache will clear the contents of the cache and prevent the users from running the App-V application while their computers are offline. However, next time they connect to the network, they will download the App-V application again and will be able to run it offline again.

<https://technet.microsoft.com/en-gb/library/cc843712.aspx> **70-697 dumps full version (PDF&VCE):**

<https://www.lead2pass.com/70-697.html> **Large amount of free 70-697 exam questions on Google Drive:**

<https://drive.google.com/open?id=0B3Syig5i8gpDX3RYMG04cEg5aEE>] You may also need: 70-698 exam dumps:

<https://drive.google.com/open?id=0B3Syig5i8gpDa2cwaDdKY1dLdHM>